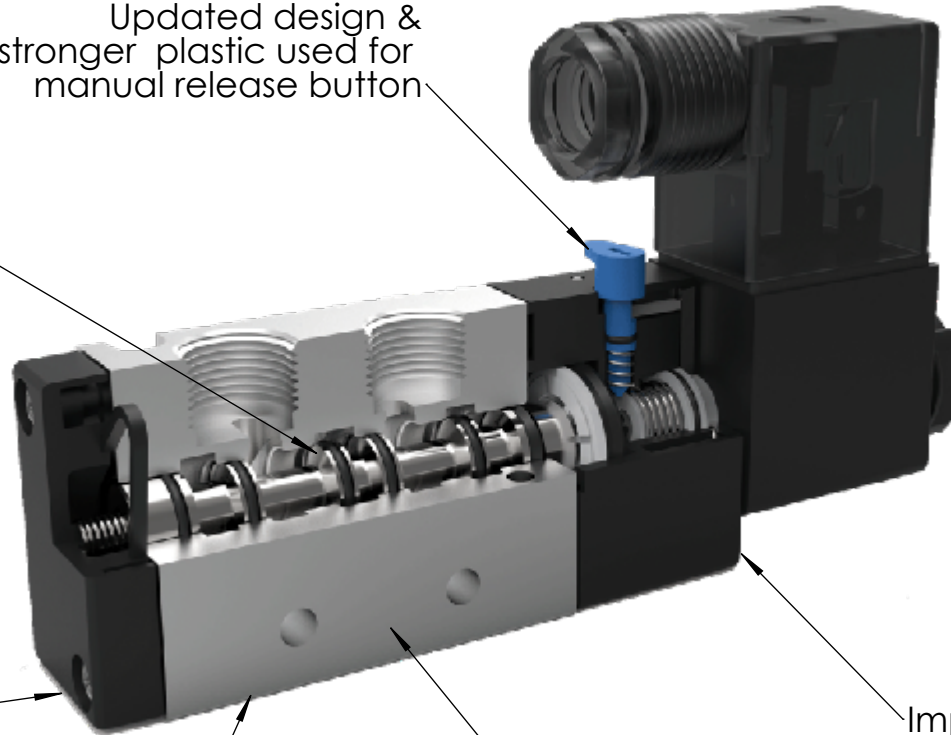


General Design Changes for 3V & 4V-Series Valves

New spool design specifically for Normally Open configurations*

Updated design & stronger plastic used for manual release button

***NOTE: New valves can no longer be switched manually between N.C. & N.O. configurations. Configuration must be stated on PO.**



Updated nut design, with improved venting & stronger plastic material

Improved cap design with embedded compression plate

Updated bottom plate design with counterbore for screws

Graphics laser-marked for greater durability

NOTE: For specific dimensional changes, please see the following pages



STC Part Number:

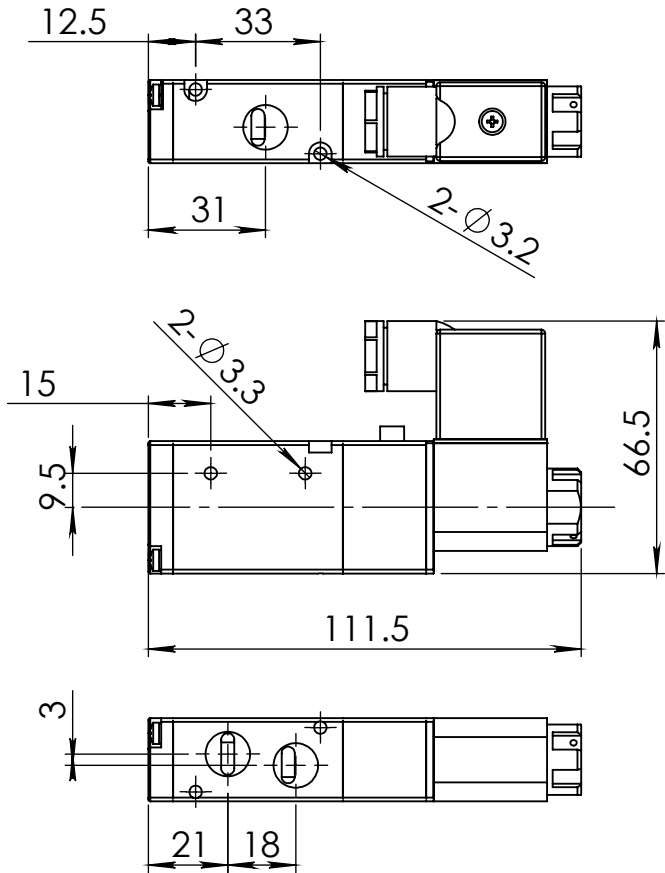
3V100-400 & 4V100-400 Series

Directional Pneumatic Valves

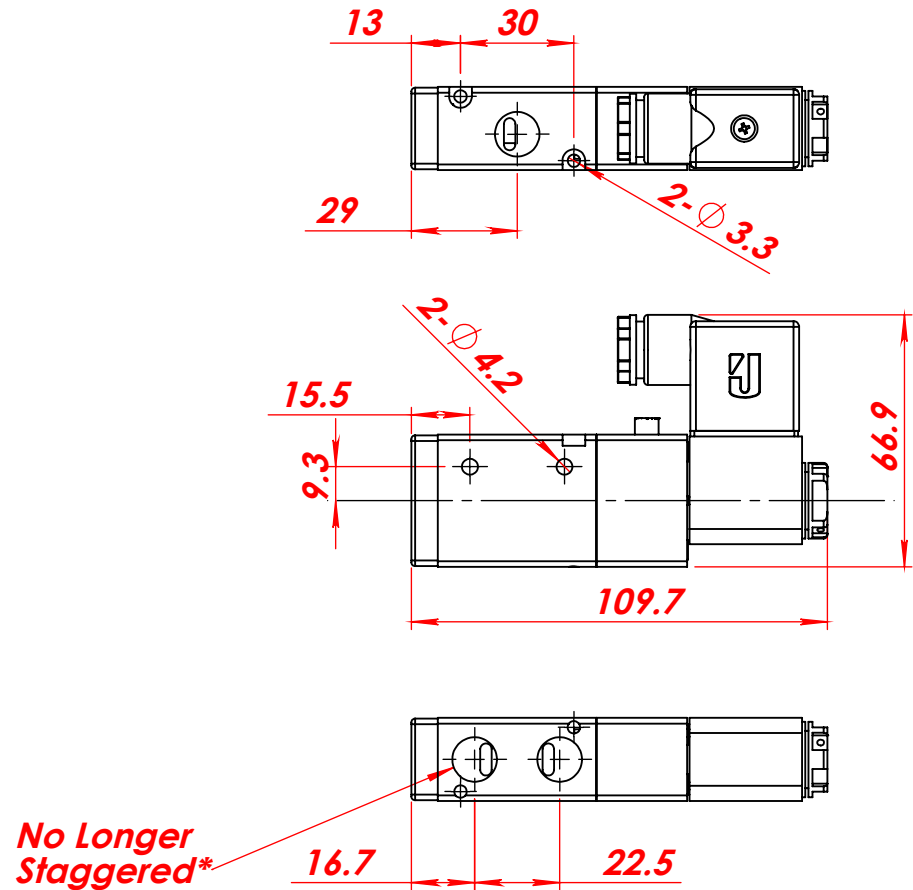
11x8.5

kfi

ORIGINAL DESIGN



UPDATED DESIGN



***NOTE: Updated valve design requires updated manifold design**

***As of 1/30/2017, Only Old Style in Stock**



STC Part Number:

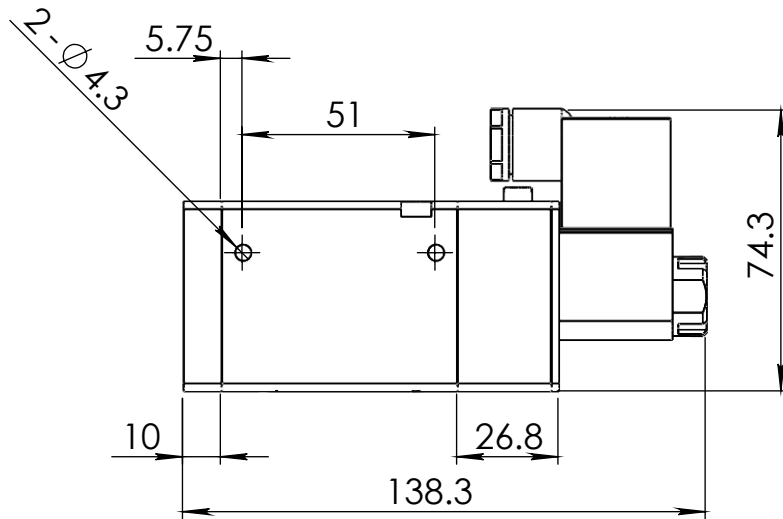
3V210-1/4

3-Way, 2-Position, Single Solenoid

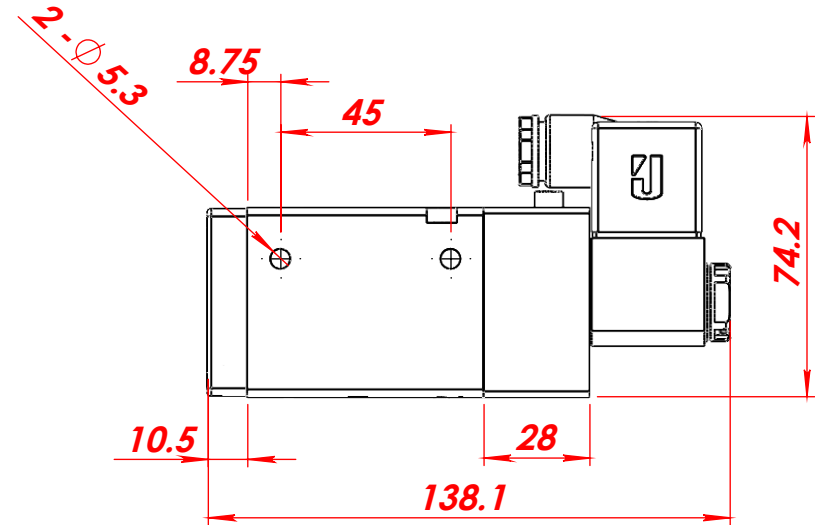
11x8.5

kfi

ORIGINAL DESIGN



UPDATED DESIGN



**As of 1/30/2017, Only Old Style in Stock*



STC Part Number:

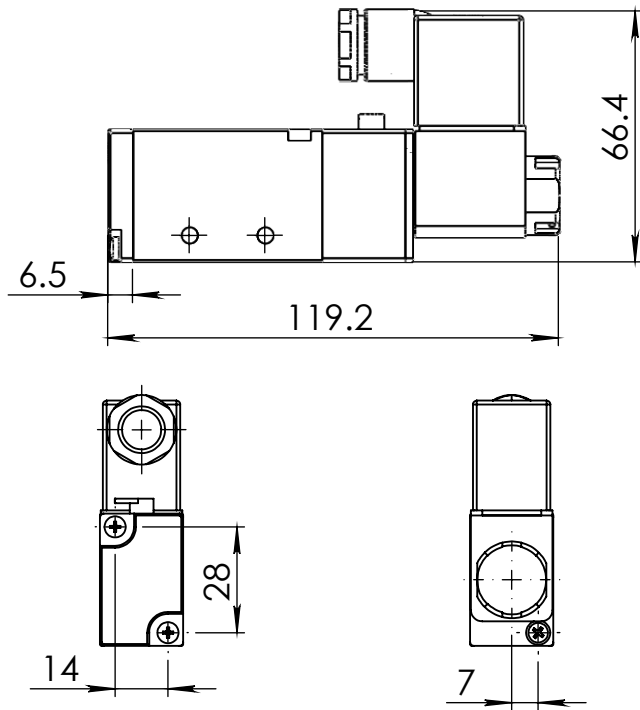
3V410-1/2

3-Way, 2-Position, Single Solenoid

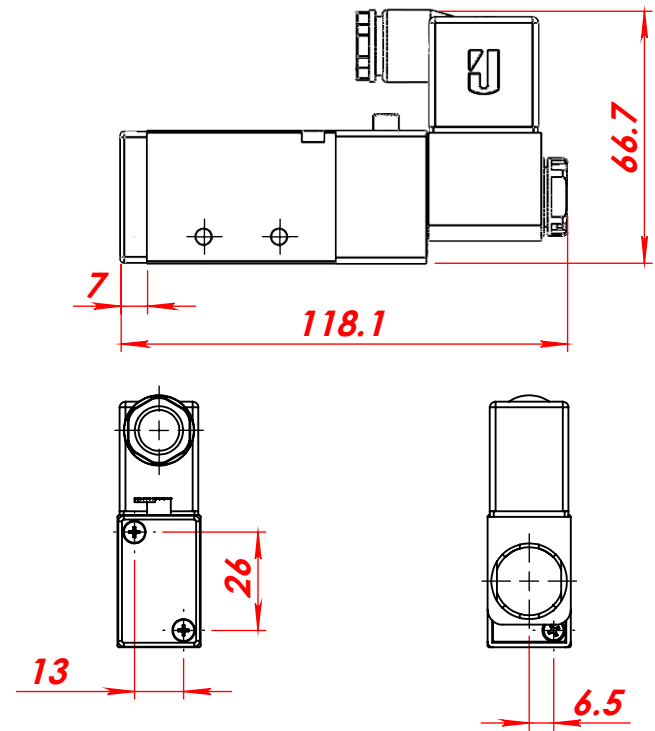
11x8.5

kfi

ORIGINAL DESIGN



UPDATED DESIGN



**As of 1/30/2017, Only Old Style in Stock*



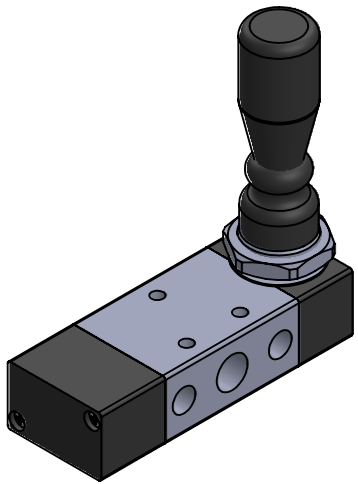
STC Part Number:

4V210-1/4

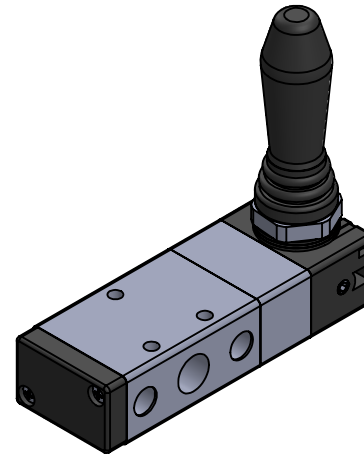
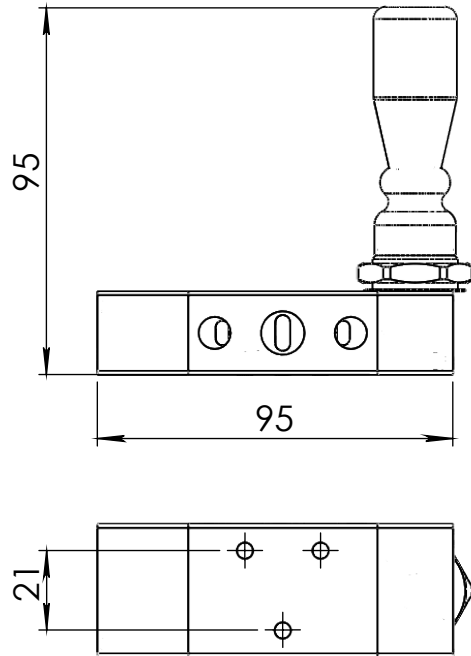
4-Way, 2-Position, Single Solenoid

11x8.5

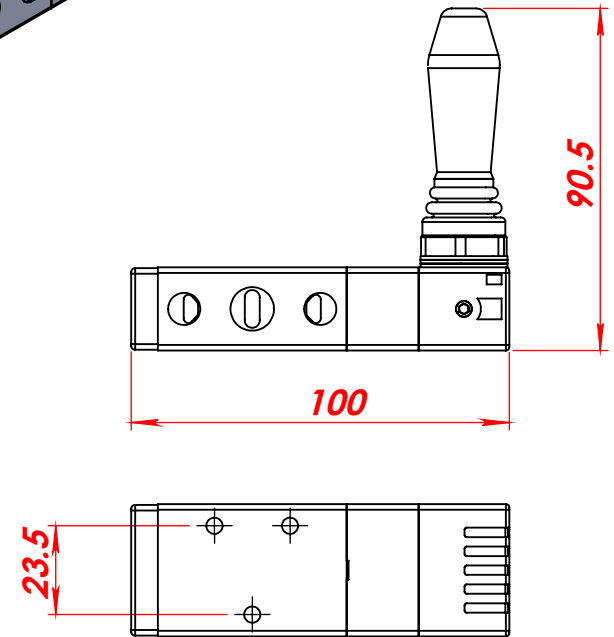
kfi



ORIGINAL DESIGN



UPDATED DESIGN



ADDITIONAL DESIGN CHANGES:

1. ABS Handle
2. Improved design for internal spool

****As of 1/30/2017, Both Old & New Styles in Stock***



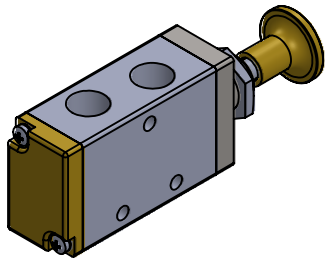
STC Part Number:

4H230C/E-M/S

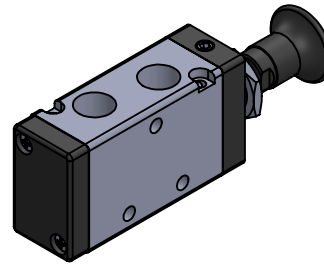
4-Way, 3-Position, Lever Valve

11x8.5

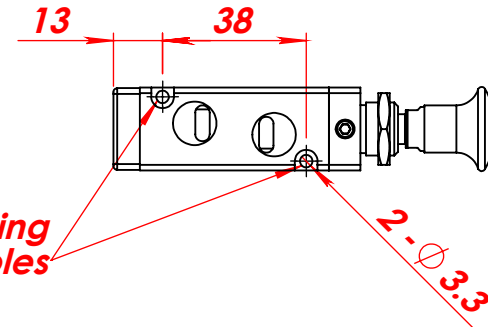
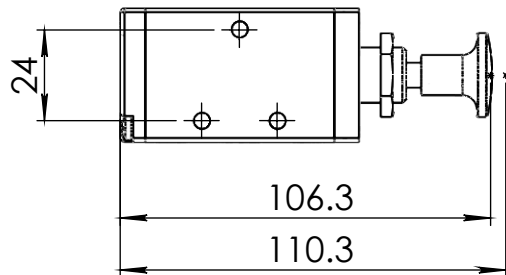
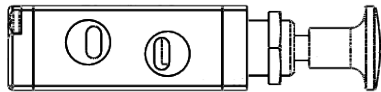
kfi



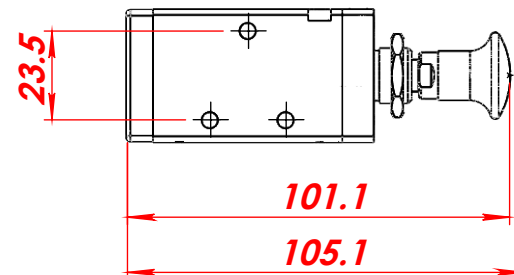
ORIGINAL DESIGN



UPDATED DESIGN



Additional Mounting Holes



ADDITIONAL DESIGN CHANGES:

1. ABS Handle
2. Updated color scheme
3. Improved design for internal spool, including bi-directional sealing
4. Mechanical positioning via steel ball added for better performance with vibrations

****As of 1/30/2017, Both Old & New Styles in Stock***



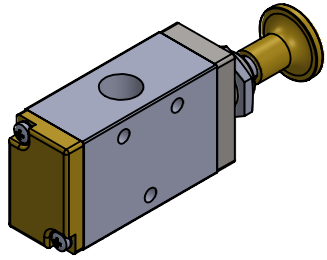
STC Part Number:

4R210-1/4M/S

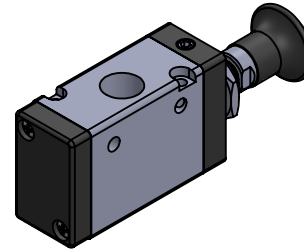
4-Way, 2-Position, Push/Pull Valve

11x8.5

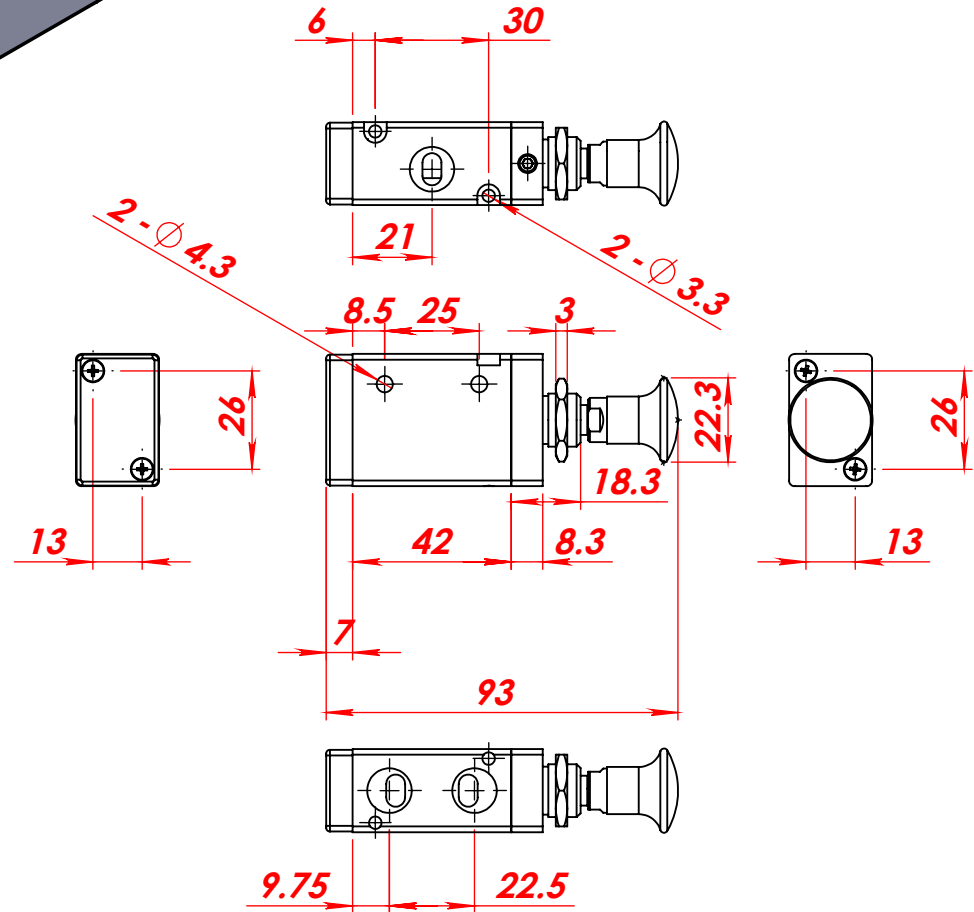
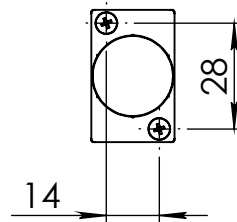
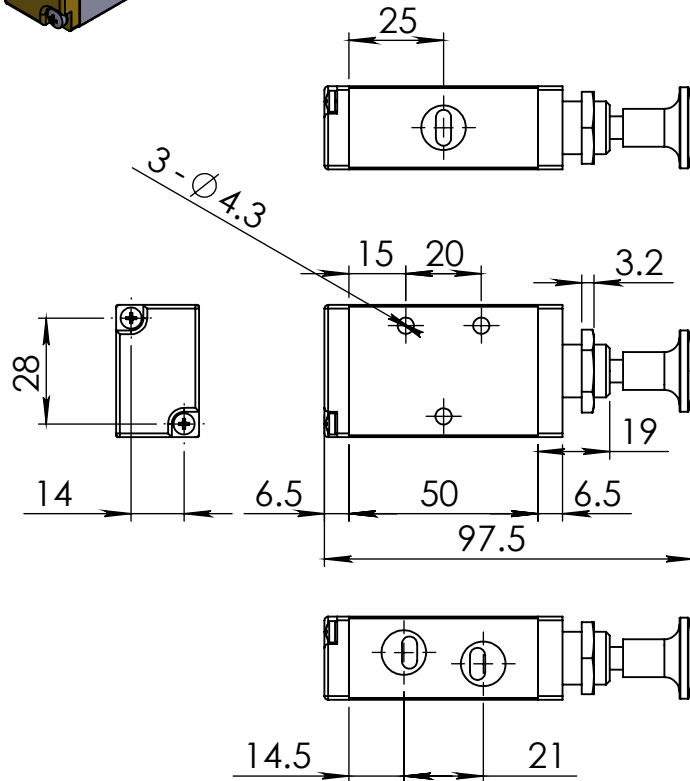
kfi



ORIGINAL DESIGN



UPDATED DESIGN



ADDITIONAL DESIGN CHANGES:

1. ABS Handle
2. Updated color scheme
3. Improved design for internal spool, including bi-directional sealing
4. Mechanical positioning via steel ball added for better performance with vibrations



Part Number:

3R210-1/4M/S

3-Way, 2-Position, Push/Pull Valve

11x8.5

kfi

****As of 1/30/2017, Both Old & New Styles in Stock***