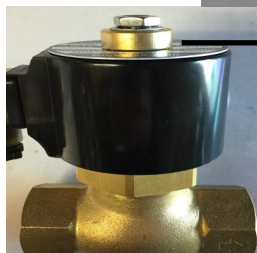
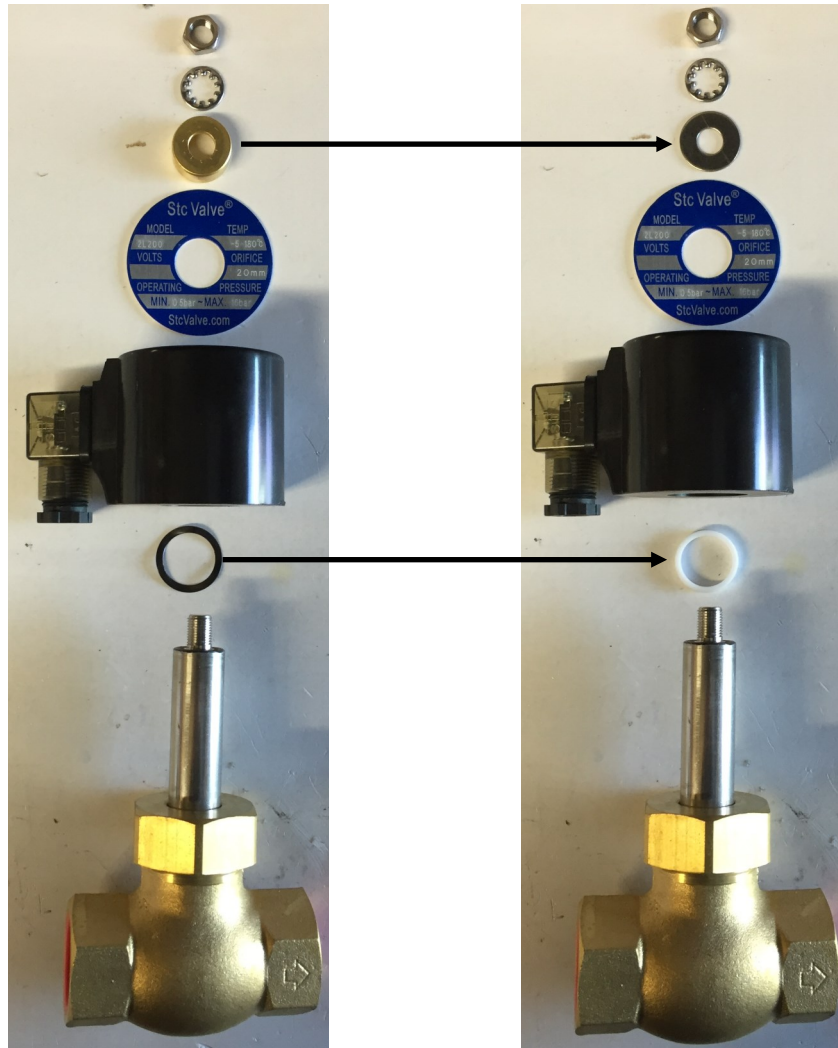


Heat Sink Installation for 2L200-1 Valve

Installation instructions:

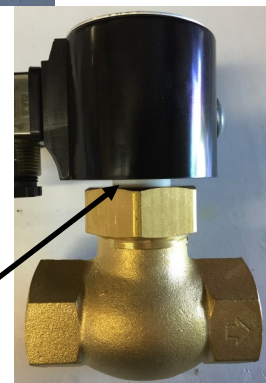
1. Disassemble coil assembly.
2. Replace brass top nut with provided steel washer.
3. Replace locking washer below coil with provided Teflon washer.
4. Reassemble coil assembly. Tighten top nut by hand, then 1/4 turn further with wrench.



Standard Configuration



Updated Configuration



Teflon washer heat sink